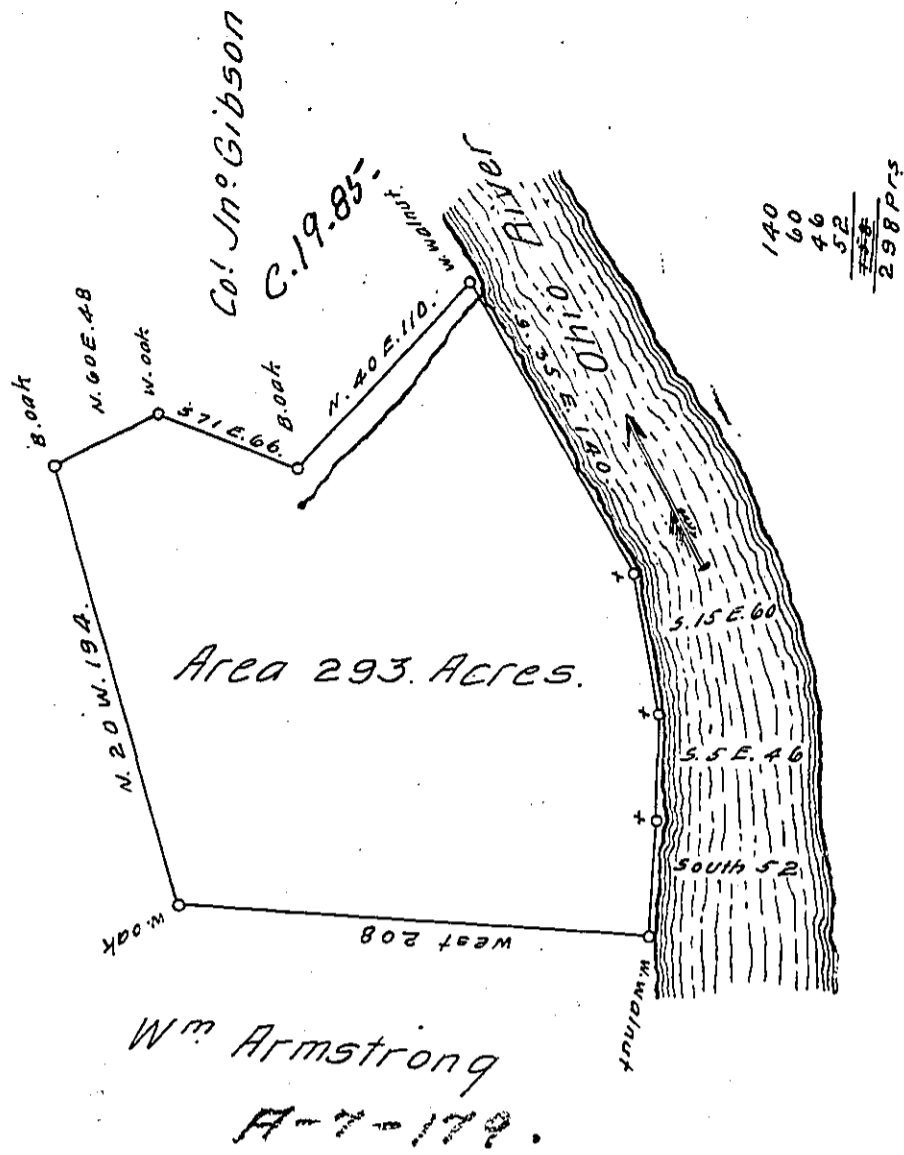


MOON TWP.
BEAVER

C. 15. 5



The above is a Draught of a Survey made April 21. 1785. for James Compass in pursuance of a Location N^o 3670. dated the 25 day of July 1769. Situate on the River Ohio. Robinson Township. Washington County. Containing 293 Acres with the Usual allowance of 6th Cent for Highways &c.

John Lukins Esq^r }
Surveyor Gen^l }

David Redick D.S.

IN TESTIMONY that the above is a copy of the original remaining on file in the Department of Internal Affairs of Pennsylvania, made conformably to an Act of Assembly approved the 16th day of February, 1833, I have hereunto set my Hand and caused the Seal of said Department to be affixed at Harrisburg, this eighteenth day of December 1911.

Henry Horvath
Secretary of Internal Affairs.